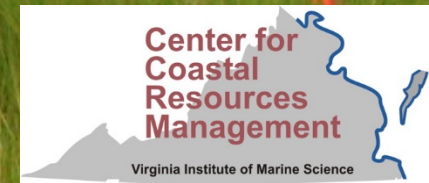
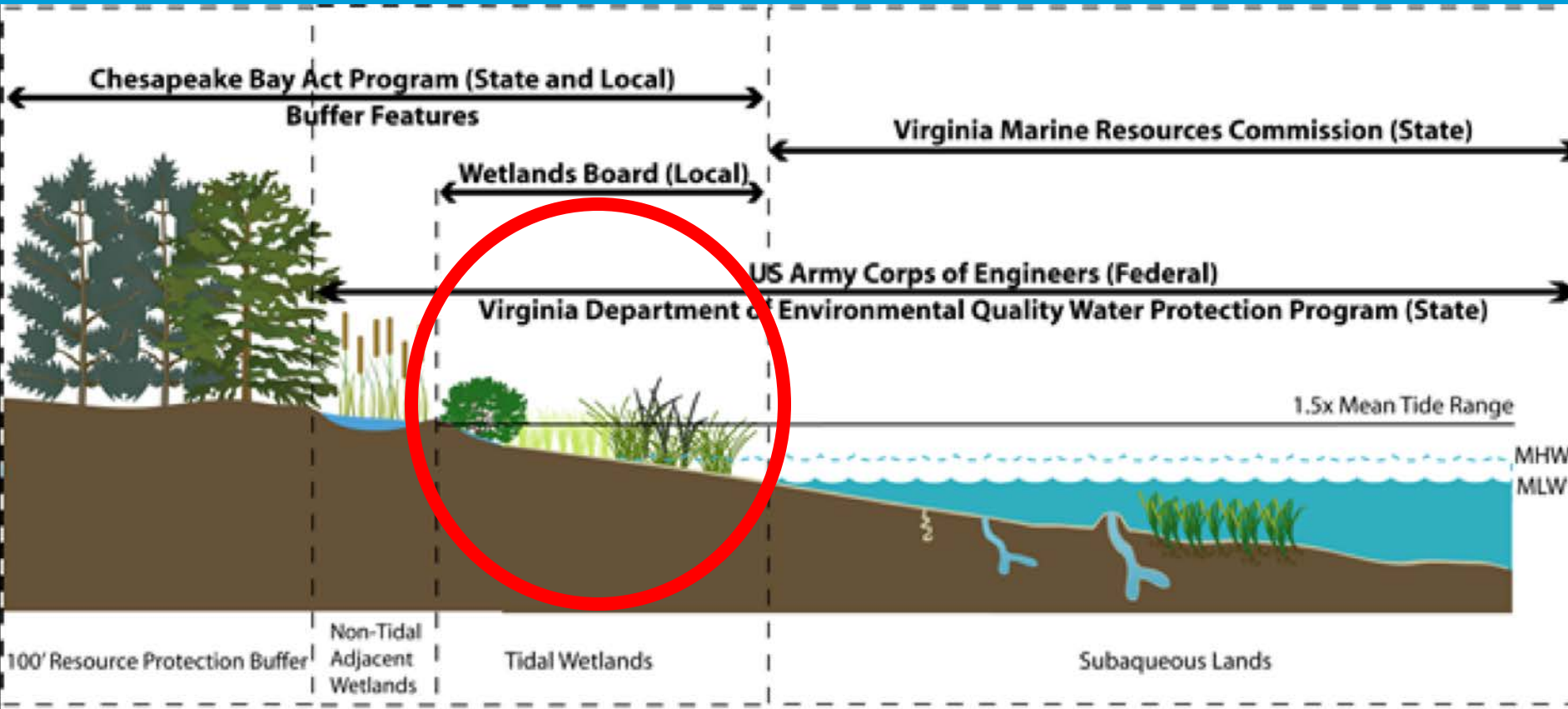


2020 Tidal Wetlands Act Amendments & Updated Wetlands Guidelines August 20, 2020



Rachael Peabody
VMRC Habitat Management Division





Virginia Shorezone Jurisdictions: legally defined shoreline resources and the relevant local, state and federal authorities. Note that some authorities cross resource boundaries and most resources have at least two responsible regulatory authorities. Symbols courtesy of the Integration and Application Network (ian.umces.edu/symbols/), University of Maryland Center for Environmental Science.

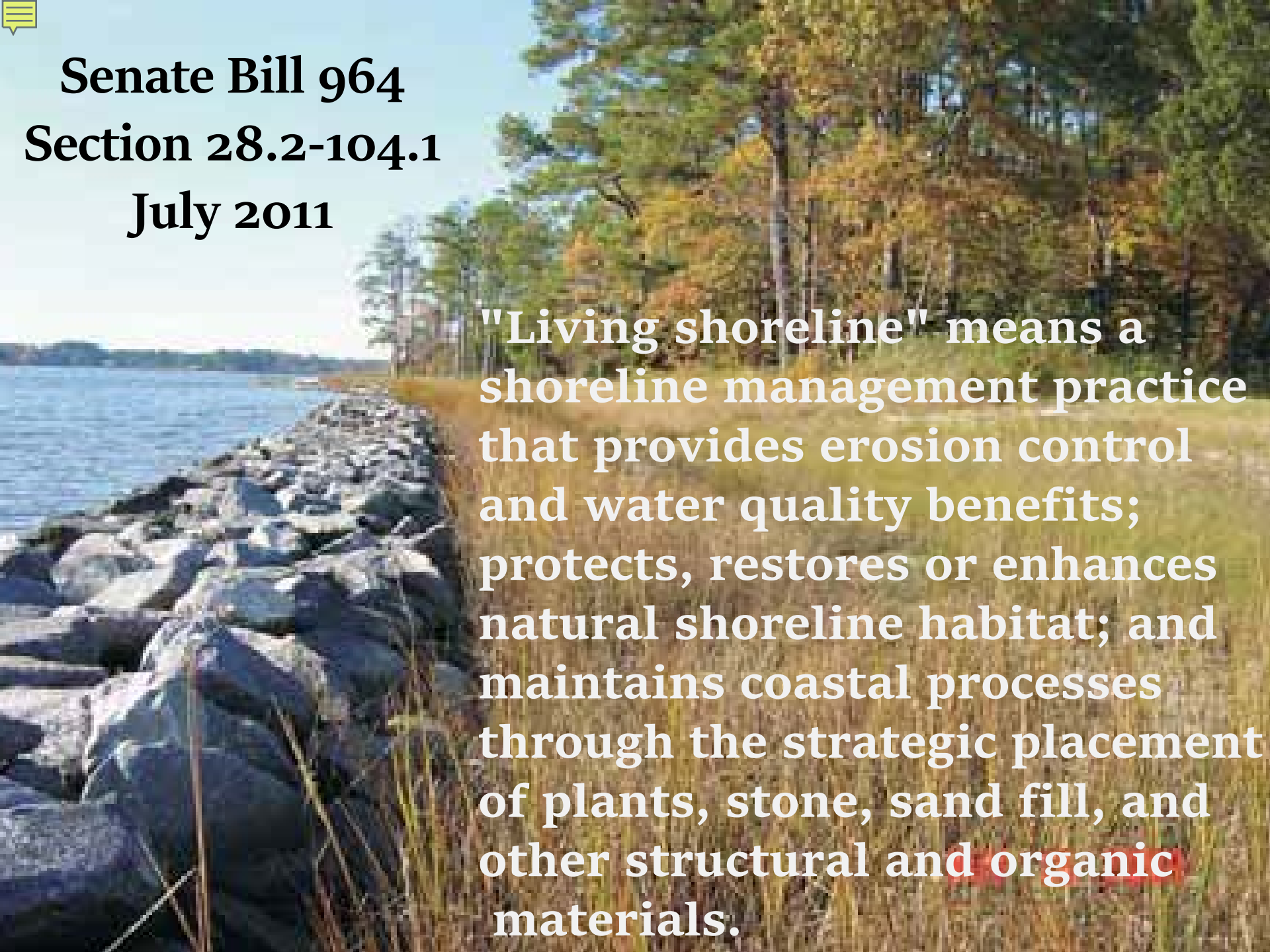



Senate Bill 964

Section 28.2-104.1

July 2011

"Living shoreline" means a shoreline management practice that provides erosion control and water quality benefits; protects, restores or enhances natural shoreline habitat; and maintains coastal processes through the strategic placement of plants, stone, sand fill, and other structural and organic materials.





2011 Legislation - Senate Bill 964

- Established living shorelines as the preferred method for shoreline stabilization
- requested VIMS to conduct a study of tidal shoreline management in Virginia and to recommend methods to streamline regulation, encourage living shoreline methods and recommendations to provide for the sustained protection of tidal shoreline resources.
- Created the framework for the development of living shoreline general permits



2020 Legislation- Senate Bill 776

- Established Living Shorelines as the default approach to shoreline control unless the “best available science” indicates the site is not suitable for such methods. (Code of Virginia 28.2-104.1)
- Requires all wetlands applications include a “statement indicating whether use of a living shoreline for a shoreline management practice is not suitable, including reasons for the determination.”



- Mandates Updates to the Commission's Tidal Wetlands Guidelines
1. Communicate to stakeholders and regulatory authorities that it is the policy of the Commonwealth to support living shorelines as the preferred alternative for stabilizing tidal shorelines;
 2. Identify preferred shoreline management approaches for the shoreline types found in the Commonwealth;
 3. Explain the risks and benefits of protection provided by various shoreline system elements associated with each management option;
 4. Recommend procedures to achieve efficiency and effectiveness by the various regulatory entities exercising authority over a shoreline management project.

- The Commission shall preserve and prevent the despoliation and destruction of wetlands while accommodating necessary economic development in a manner consistent with wetlands preservation and any standards set by the Commonwealth in addition to those identified in § [28.2-1308](#) to ensure protection of shorelines and sensitive coastal habitats from sea level rise and coastal hazards, including guidelines and minimum standards promulgated by the Commission pursuant to subsection

VMRC's Wetlands Guidelines Workshops

WEBEX 10:00 AM – Noon

August 26, 2020

Listening to Local Regulators

September 9, 2020

Minimum Standards for the Use and Development of Wetlands

September 30, 2020

Best Management Practices for Preferred Shoreline Approaches

October 14, 2020

Policies for Managing for Sea Level Rise and Climate Change

Each workshop will have 5-7 “panelists” that will have the availability to speak at-will during the meeting and lead the conversation. Panelists will include scientists, contractors, NGOs, local government, or sister agencies with expertise on the workshop theme. However, **each workshop will be open to the public.** The public will be afforded the opportunity to give timed comments during each work session. In addition, comments can be sent to wetlandsguidelines@mrc.virginia.gov.

Webex information and workshop agendas can be found [Here](#)

<https://mrc.virginia.gov/calendar.shtm>

Shoreline Management

- **Comprehensive Coastal Resource Management Portals (CCRMPs):** General and locality specific shoreline management guidance for all coastal zone localities. This is a gateway to current and historic shoreline management information, including interactive mapping tools, shoreline and tidal marsh inventory reports, sea-level rise and flooding information, GIS data for downloading, and other locality-specific VIMS shoreline publications.

How many miles of shoreline are in my county?

What VIMS shoreline publications are available for where I live?

- **Self-Guided Decision Tools:** Interactive (**Shoreline Decision Support Tool**) and static decision trees that lead users through questions about shoreline conditions to help choose the most effective erosion control strategy based on surrounding shoreline conditions. (more information is available in your locality's **CCRMP**)

Will a living shoreline work on my property to control erosion?

My bulkhead is failing, what should I replace it with?

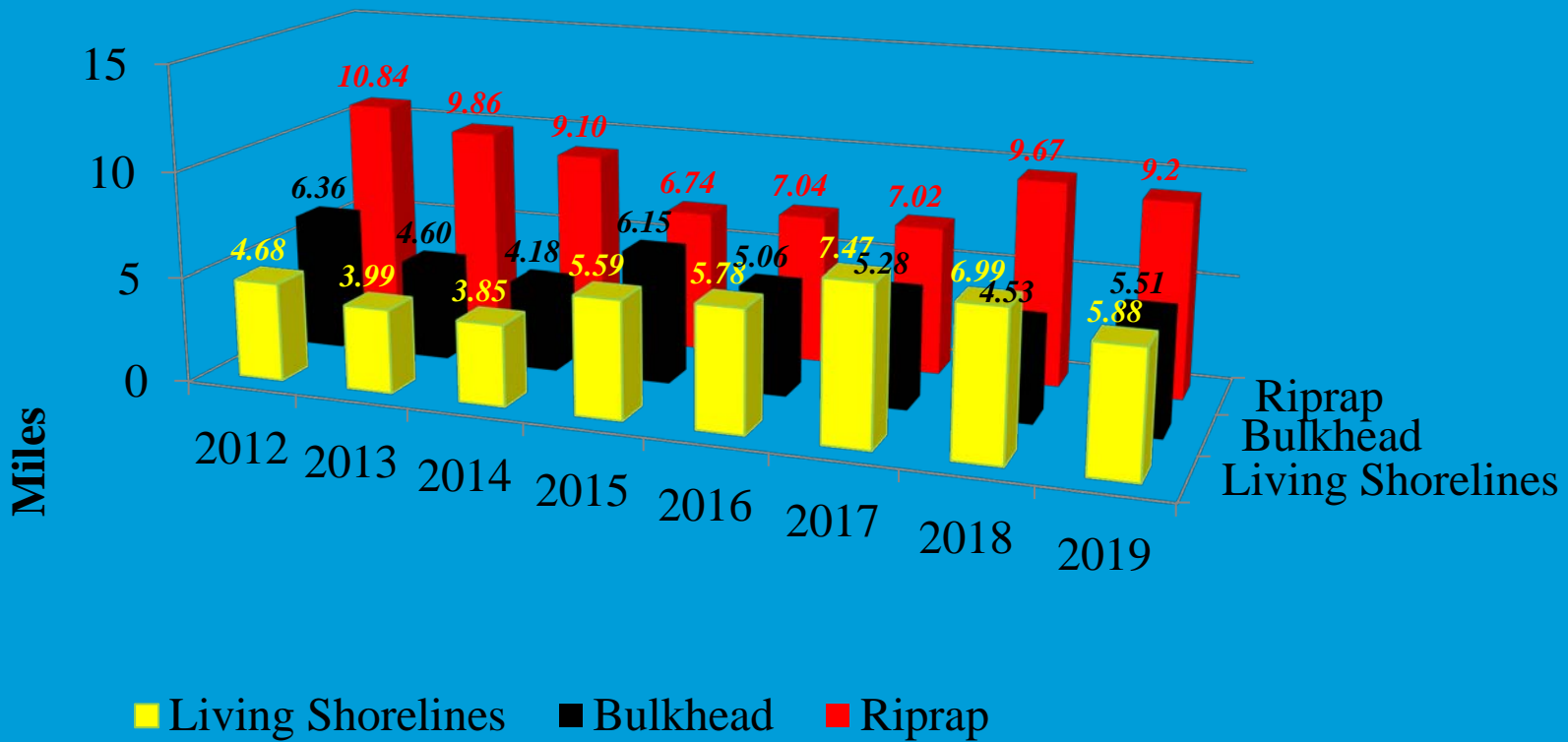
- **Shoreline Assessment Mapper (SAM):** This interactive map displays a variety of coastal resource data across the entire coastal plain of Virginia. Map users can view information at a large-scale or across multiple jurisdictions. (Locality specific information is available in the **CCRMPs**)

Where are wetlands located in the coastal plain?

What localities have aquaculture activity?

<https://www.vims.edu/ccrm/tools/index.php>

Application Requests for Riprap, Bulkheads and Living Shorelines (2012-2019)



**Table 1. Application Requests for Riprap, Bulkhead and Erosion Control Structures With Living Shoreline Components
July 1, 2011 - August 10, 2020**

Erosion Control Structure	Length (feet)	Miles	% Total
Bulkhead	261800	49.58	0.27
Riprap	421622	79.85	0.44
<i>Subtotal</i>	<i>683422</i>	<i>129.44</i>	
Living Shoreline Individual Totals	285435	54.06	0.29
Sill	107003	20.27	
Breakwater	48502	9.19	
Other Breakwater Str	7901	1.50	
Coir Log	13799	2.61	
Bioengineered	61366	11.62	
Marsh Toe Sill	46864	8.88	

Questions??

wetlandsguidelines@mrc.virginia.gov

