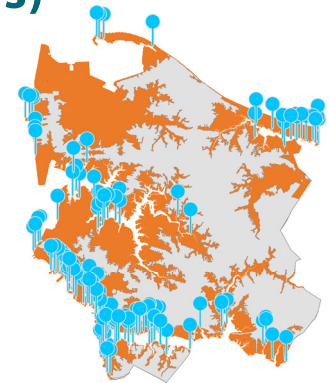


COASTAL RESILIENCE SUMMARY

CITY OF NORFOLK, VIRGINIA

Natural and Nature-Based Features (NNBFs)

Forests, trees, wetlands, beaches, and living shorelines benefit communities by reducing storm wave energy, soaking up floodwaters, improving water quality, providing areas for recreation, creating habitats for important plants and animals, and even lowering flood insurance costs. These **Natural and Nature-Based Features (NNBFs)** have been mapped for areas that are less than 10-feet in elevation, experience tidal and storm flooding, and include buildings at risk. *(All numbers are approximate.)*



MAP: Norfolk coastal areas less than 10-ft elevation, with targets for new NNBFs

NNBFs in Norfolk Coastal Areas

3,187 acres All Coastal NNBFs, including:



2,169 acres Wooded



585 acres Tidal Marsh



133 acres Forested Wetland



123 acres Emergent Wetland



>6 miles Hybrid Living Shorelines

Visit www.AdaptVA.org to view all coastal NNBFs

Benefits of NNBFs in Norfolk



2,279 acres of NNBFs that decrease flooding risks for buildings



3,091 acres of NNBFs that improve water quality by reducing sediment, nitrogen, and phosphorus



1,168 acres of NNBFs potentially eligible for FEMA Community Rating System credits (100-ft RPA buffer and wetlands located within 100-year flood zones)

Coastal Area Facts

for areas less than 10-ft elevation

48% of Norfolk area (16,563 acres)

22,980 coastal buildings

39 critical facilities

1,198 coastal buildings without NNBF benefits

120 targets for new NNBFs

Chesapeake Bay RPA 100-ft Buffer Overview

across all of City of Norfolk

2,386 acres of RPA buffer

834 acres of RPA buffer currently turfgrass potentially eligible for water quality credits if converted into NNBF



To learn more: www.vims.edu/ccrm/nbf